

BUYERS' GUIDE

BESPOKE BOXES

CONTENTS

INTRODUCTION

1_ BUILD THE BOX

1.1_OVERVIEW

1.2_PRICING OVERVIEW

1.3_STYLE

1.4_MATERIAL

1.5_SIZE & SHAPE

1.6_INSERTS & FEATURES

2_ DESIGN & PRINT

2.1_COLOUR OPTIONS

2.2_ADDITIONAL FINISHES

2.3_DESIGN YOUR BOX

3_ DELIVERY & AFTERCARE

3.1_LEAD TIME

INTRODUCTION

By giving you the information you need to make the best decision possible, we help you create a box that is specific to your needs.

At Precious Packaging we pride ourselves on offering unique, creative and quality-focused products.

Our Buyers' Guide is designed to help you understand the wide variety of options available to you as a customer, a complete source of information, including all the features available as well as an overview of our most popular products.

1 _ B U I L D T H E B O X

1.1 OVERVIEW



Approximate Cost
Approximate base cost of boxes. Any additional finishes and dimensions will affect the final cost.

MOQ

Minimum Order Quantity
The minimum number of boxes that can ordered. Increasing your order volume will decrease your unit cost.



Lead Time
Approximate time it will take for boxes to be delivered. Can be increased or decreased to suit your needs and budget.

Shoe Box



£ £ £ £ £
MOQ: 250 Units

Presentation Box



£ £ £ £ £
MOQ: 250 Units

Gift Box



£ £ £ £ £
MOQ: 250 Units

Bottle Box



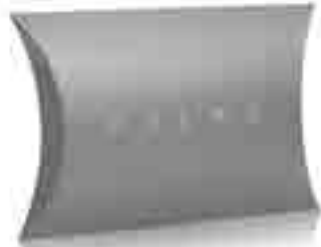
£ £ £ £ £
MOQ: 250 Units

Cake Box



£ £ £ £ £
MOQ: 1000 Units

Pillow Box



£ £ £ £ £
MOQ: 250 Units

Corrugated Mailing Box



£ £ £ £ £
MOQ: 1000 Units

Gift Card Box



£ £ £ £ £
MOQ: 250 Units

Jewellery Box

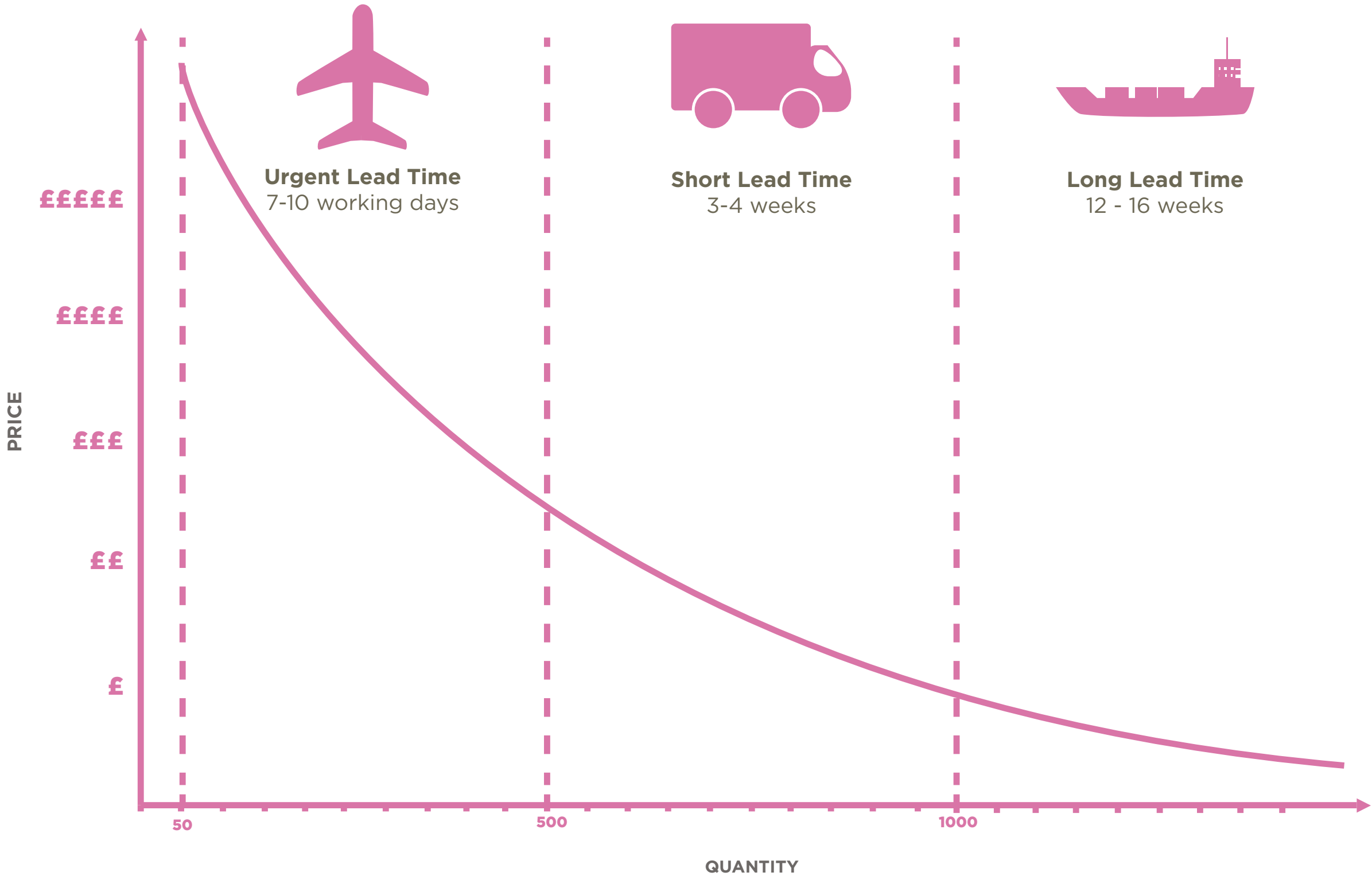


£ £ £ £ £
MOQ: 250 Units

1.2 PRICING OVERVIEW

This graph gives an overview of the cost of an order depending on quantity ordered and the chosen lead time.

A larger order quantity and/or a longer lead time will decrease the price per unit, therefore be much more cost effective.



1.3 STYLE

Step 1: Choose the style of your box



Available on Matte or Uncoated boxes.
Recommended on heavier weights to promote the inks metallic properties.
Available in Paperboard and Corrugated box for cost effective options.



Available on Paperboard as well as Rigid Card.

Metallic foils or Solid Colour Pigments are available.



Available on Rigid Card boxes.

Comes as standard on paperboard & corrugated boxes.



Available on Paperboard & Corrugated boxes.
Recommended for bottle & candle boxes.



Available on Paperboard & Corrugated boxes.
Recommended for mailing boxes.



Available with or without handles.

1.4 MATERIAL TYPES

Step 2: Select your preferred material & weight

Paperboard



Perfect for pillow boxes, cosmetic and candle boxes.

Corrugated Card



Excellent material for mailing boxes.

Rigid Card



A Luxurious material ideal for large gift boxes and shoe boxes.

E Flute



EB FLute



BB FLute



1.5mm

2mm

3mm

Ideal weight for cosmetic boxes.

This is the standard gsm weight for small cosmetic boxes.

Not suitable for heavy products or shipping. Available with all print options.

Standard weight for cake & pillow boxes.

Coated with either Matte or Gloss laminate as standard. Foodgrade options available.

Not suitable for heavy products or shipping. Available with all print options.

Perfect for Mailing boxes.

Lightweight & strong, excellent for posting products.

Not suitable for heavy products. Available with all print options.

A more robust weight of mailing box.

Strong & durable, uncoated as standard.

Suitable for medium weight products and shipping. Available with all print options.

Excellent for storage and shipping.

Extremely strong can handle heavy goods, uncoated as standard.

Embossing & Debossing are not recommended on this material.

Luxurious card suited for gift boxes.

Versatile suitable for gift boxes, common material for shoe boxes.

Available with all print options.

Durable weight ideal for large boxes.

Heavier weight provides stability on long boxes.

Available with all print options.

Premium weight of card.

Rigid card that creates a solid & strong box suitable for long boxes that need added strength.

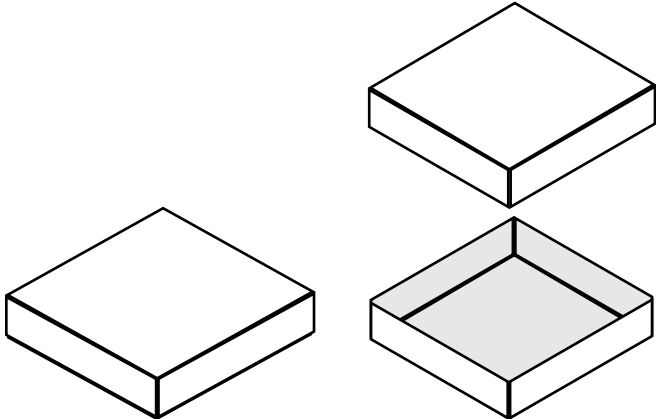
Available with all print options.

1.5 SIZE & SHAPE

Step 3: Choose the size & shape in millimetres (WxL+Dmm)

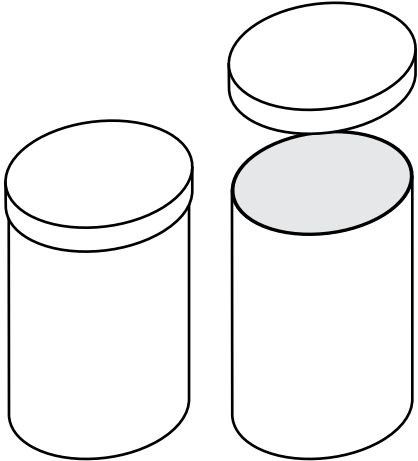
We make all of our boxes bespoke, meaning we can cater to any size or shape of box you require.

Standard Box



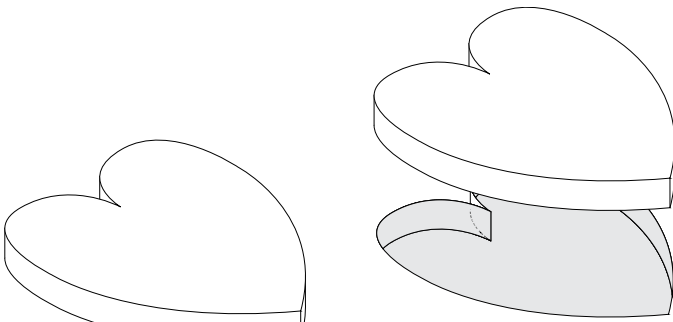
200x180+80mm

Cylinder



150x150+250mm

Bespoke Shape



200x180+80mm

1.6 INSERTS & FEATURES

Step 4 (optional): Choose any additional features to add to your design



Luxury inserts available in Foam or Paperboard customised to hold your product. Perfect for gift wallets.



Pre made ribbon bow available in Satin, Gros Grain & Cotton ribbon.



Clear PVC window available on all styles of boxes.



Available on all styles of boxes.

Commonly used to separate Macaroons or to wrap your product inside the box.



Available on all styles of boxes.

A more luxurious way to secure & present your products.



Available on Rigid Card boxes.

Hand inserted handles provide a convenient way to carry your gift box, more durable than a paper bag.

2 _ DESIGN & PRINT

2.1 COLOUR OPTIONS

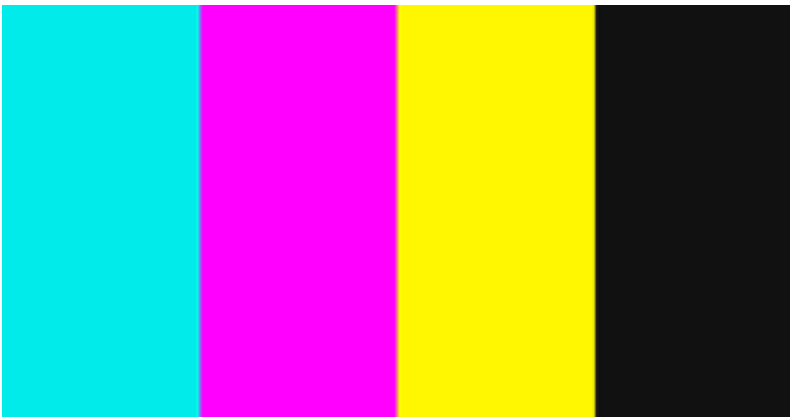
Step 5: Select your print colours



Pantone Specific

Used on designs with four or less colours.

Available on all paper weights & finishes.



CMYK

Used on designs with five or more colours.

Available on all paper weights & finishes.



Special Pantone

Includes metallic, pastel and neon.

Available on all paper weights & finishes.



Full Colour

Used for photographic prints

Available only on heavier paper weights.

2.2 ADDITIONAL FINISHES

Step 6 (optional): Choose any additional finishes to add to your design



+10%

Available on Matte or Uncoated boxes.

Subtly reveal varnished designs to add a touch of class to your packaging.



+15%

Available on all styles of boxes.

Metallic foils or Solid Colour Pigments are available, process creates a slight debossed design.



+25%

Available on all styles of boxes.

Recommended on Rigid & Paperboard boxes due to corrugated board material properties affecting the embossing.



+10%

Available on all styles of boxes.

Recommended on Rigid & Paperboard boxes due to corrugated board material properties affecting the debossing.



+15%

Available on all styles of boxes.

Inside print continues the luxurious feel when you open the box.



+25%

Available on Rigid Card boxes.

This finish adds a luxury feel to the box, available in a wide range of textures.

2.4 DESIGN YOUR BOX

Step 7: Select a design package

File Specifications

- If you're unsure, don't worry! All files including PDFs will be reviewed by our team.
- **Vector format illustrations and logos** - .ai, .eps and .pdfs
- **Photographs** - .jpg, .tiff, and .pdfs at **300dpi**.
- Have a look at our [Design Guides](#) for more information on designing bags.

	STANDARD For when you know what you want FREE	ADVANCED SAMPLE For when you have a good idea £350	DESIGN CONSULTATION For when you need to be inspired £600
2D Net	✓	✓	✓
Pantone / CMYK Colour Matching	✓	✓	✓
Bespoke Product Specification	✓	✓	✓
Bitmap to Vector Logo conversion			✓
Design Options		✓ Up to 3 designs	✓ Up to 10 designs
Product Design Options			✓
3D Artwork		✓	✓
One-on-One Consultation with the Design Team, in person			✓
Pre-Production Sample of exactly what you want		✓	✓
Continuous support over phone/email	✓	✓	✓

3 _ DELIVERY & AFTERCARE

3.1 LEAD TIMES



Urgent Order

Delivered within 7 - 10 days
(UK made or airfreighted in Europe).

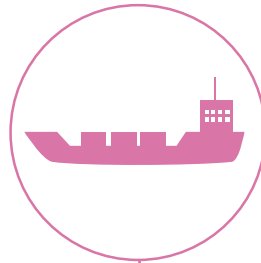
£ £ £ £ £



Short Lead Time

3 - 4 weeks
(Made in Europe)

£ £ £ £ £



Long Lead Time

12-16 weeks (Made in Asia)

£ £ £ £ £

Need samples?

Sample packs are available and completely refundable when you purchase printed packaging.
Click [here](#) for more information.

Need storage?

We also offer discounted warehouse facilities for all our customers.
Talk to one of our Customer Account Managers for more information on [0845 338 1741](#).