

BUYERS' GUIDE

BESPOKE SUIT BAGS AND GARMENT COVERS

CONTENTS

INTRODUCTION

1_ BUILD THE BAG

1.1_OVERVIEW

1.2_PRICING OVERVIEW

1.3_STYLE

1.4_MATERIAL STYLE

1.5_MATERIAL TYPES

1.6_HANDLE TYPES

1.7_FEATURES

2_ DESIGN & PRINT

2.1_COLOUR OPTIONS

2.2_ADDITIONAL FINISHES

2.3_DESIGN YOUR BAG

3_ DELIVERY & AFTERCARE

3.1_LEAD TIME

INTRODUCTION


By giving you the information you need to make the best decision possible, we help you create a bag specific to your needs.

At Precious Packaging we pride ourselves on offering unique, creative and quality-focused products.

Our Buyers' Guide is designed to help you understand the wide variety of options available to you as a customer, a complete source of information, including all the features available as well as an overview of our most popular products.

1_ BUILD THE BAG


1.1 OVERVIEW



Approximate Cost
Approximate base cost of bags. Any additional finishes and dimensions will affect the final cost.



Minimum Order Quantity
The minimum number of bags that can ordered. Increasing your order volume will decrease your unit cost.



Lead Time
Approximate time it will take for bags to be delivered. Can be increased or decreased to suit your needs and budget.

PEVA







MOQ: 100 Units

Non Woven







MOQ: 100 Units

Non Woven & PEVA Mix







MOQ: 100 Units

Cotton







MOQ: 250 Units

Impertex







MOQ: 250 Units

Dress Cover







MOQ: 100 Units

With/Without Handles







MOQ: 100 Units

Overprint







MOQ: 100 Units

Fully Bespoke





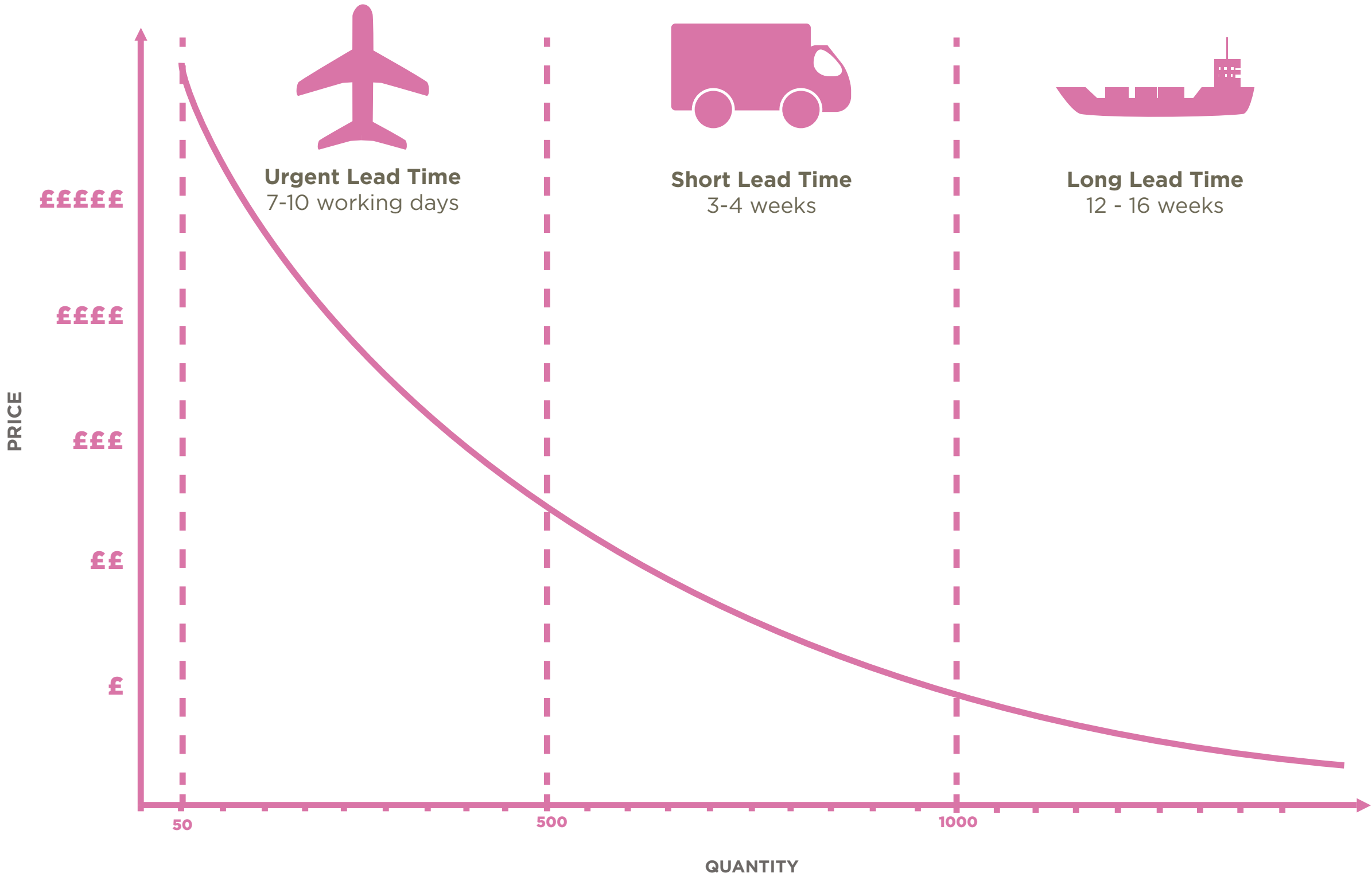


MOQ: 500 Units

1.2 PRICING OVERVIEW

This graph gives an overview of the cost of an order depending on quantity ordered and the chosen lead time.

A larger order quantity and/or a longer lead time will decrease the price per unit, therefore be much more cost effective.



1.3 STYLE

Step 1: Choose the style of your bag



The Hook of the garment hanger becomes the handle. Garment covers are usually rounded at the top and have a straight edged bottom.

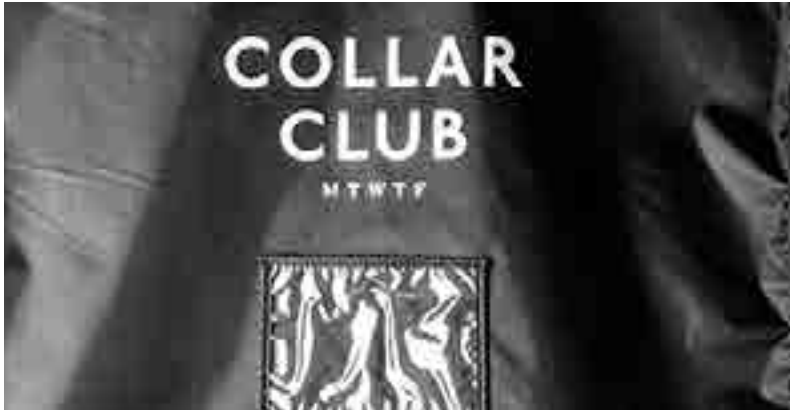
Shape of the cover is usually rounded shoulders on both ends and folds in the middle. Handles allow the cover to be carried.

A feature found on bespoke and standard bags, the shape of the bag can vary. The gusset allows for multiple garments to be carried in the one cover.

Long garment covers, round shoulders and commongly flared at the bottom to accomodate large dresses. Gussets are standard on these styles of bags due to their primary use as wedding covers.

1.4 MATERIAL WEIGHT

Step 2: Select your preferred material weight



Breathable weight for Non Woven garment covers.

Chosen for because of its strength whilst remaining lightweight.

Impertex is commongly found at this heavier weight as it has added stength, durability and a more luxurious feel.

Bespoke bags have the option to increase the weight, commongly used for gusseted bags that carry multiple garments.

Perfect weight for Breathable Garment Covers.

Ideal weight for Tote & Cotton Shoppers.

A more robust weight of PEVA carriers.

Strong & perfect for carrying multiple garments.

Lighter than standard weights of cotton, ideal for covers to protect garments whilst in storage.

Standard weight of PEVA & Non Woven covers, suitable for carrying garments.

Suitable for bags that travel alot, the thicker material offers the best protection.

Bespoke weight that is ideal for covers that are to carry heavy or multiple garments.

Material can be dyed, all styles of printing are available.

Material can be dyed, all styles of printing are available.

Material can be dyed, all styles of printing are available.

Material can be dyed, all styles of printing are available.

1.5 MATERIAL TYPE

Step 3: Select your preferred material

PEVA

An extremely tough wearing and waterproof material these are a long lasting a popular product. With matching PEVA handles, double stitched lining as well as an interior zip and top metallic hook to thread over the hanger.

Additional features of PEVA Garment Bags are Perspex Pockets and Velcro seals as an alternative to hooking the bag through the hanger.

Non Woven

Our Non-woven Suit Bags have been manufactured to a high level of quality from a strong and tough material. What makes these bags unique is that the materials used are recyclable and environmentally friendly.

Impertex

Heavier weight than standard PEVA, Imertex provides a more luxurious finish that is still tough wearing and waterproof. Impertex is perfect for heavy duty carriers, reinforcement can be added to create a cover for multiple garments. Usually the inside is a Non-Woven material to allow the garment to breathe.

Cotton

Cotton garment covers are well suited to carrying all your suits and outerwear and does so in a cost effective and eco-friendly fashion. Cotton is also very durable and is guaranteed to last an extended period of time.

PEVA



Non Woven



Impertex



Cotton



1.6 HANDLE TYPES

Step 4: Select your preferred handle



Standard type of handle for Handled carriers, usually made from the same material as the outside of the bag.



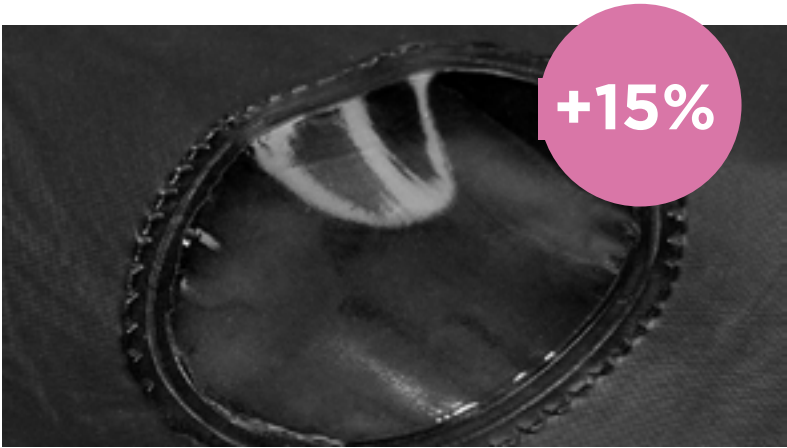
Folded over and stitched, thick handles that add extra comfort, strength and luxury.



Rigid plastic provides the sturdiest of handles, excellent for carrying heavy garments. Suited for bags that use a heavier weight of material to support the handle.

1.7 FEATURES

Step 5: Choose any additional features to add to your design



Clear windows allow the contents to be viewed. Come as standard on premade carriers, though shape and size may vary.



Various weights of Metal or plastic zips allowing access to your garment, front or back. Come as standard on premade carriers.



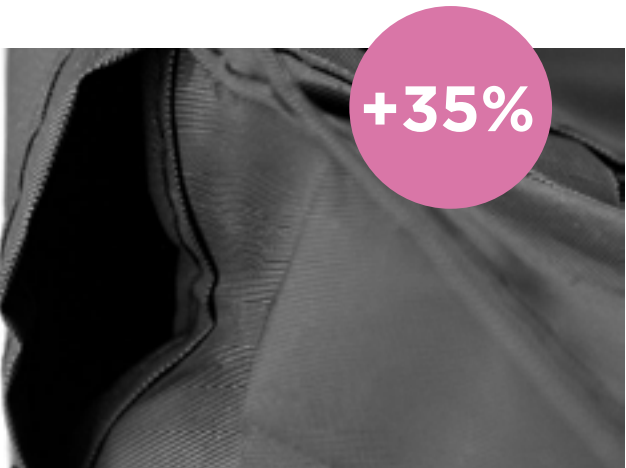
Strong metal buttons, securing your cover whilst folded, available on bespoke carriers.



Available on bespoke bags only. Stitching can be matched to your bag or with metallic thread.



Metal hoop offers reinforcement for hanger hook, or to hang garment. Internally can be fitted to a rigid bar to suspend the garments within the cover.



The addition of a gusset allows the cover to fit larger garments. Available on bespoke carriers, customised to your exact needs.



Perspex pockets allow the contents to be stored and viewed. Bespoke sizes and materials can be used.



Available on bespoke bags only. Base material can be dyed to match your Pantone or Textile reference code.

2 _DESIGN & PRINT

2.1 COLOUR OPTIONS

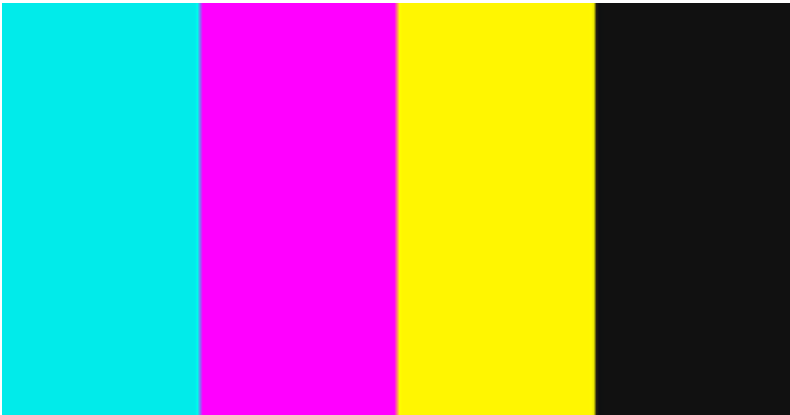
Step 6: Select your print colours



Pantone Specific

Used on designs with four or less colours.

Available on all plastic finishes.



CMYK

Used on designs with five or more colours.

Available on all plastic finishes.



Special Pantone

Includes metallic, pastel and neon.

Available on all plastic finishes.



Full Colour

Used for photographic prints.

2.4 DESIGN YOUR BAG

Step 7: Select a design package

<div>File Specifications</div> <div><ul style="list-style-type: none">If you're unsure, don't worry! All files including PDFs will be reviewed by our team.Vector format illustrations and logos - .ai, .eps and .pdfsPhotographs - .jpg, .tiff, and .pdfs at 300dpi.Have a look at our Design Guides for more information on designing bags.</div>	STANDARD	ADVANCED SAMPLE	DESIGN CONSULTATION
	For when you know what you want	For when you have a good idea	For when you need to be inspired
	FREE	£350	£600
	2D Net	✓	✓
	Pantone / CMYK Colour Matching	✓	✓
	Bespoke Product Specification	✓	✓
	Bitmap to Vector Logo conversion		✓
	Design Options	✓ Up to 3 designs	✓ Up to 10 designs
	Product Design Options		✓ ✓
	3D Artwork	✓	
One-on-One Consultation with the Design Team, in person			✓
Pre-Production Sample of exactly what you want		✓	✓
Continuous support over phone/email	✓	✓	✓

3 _ DELIVERY & AFTERCARE

3.1 LEAD TIMES



Urgent Order

Delivered within 2-3 weeks (UK made or airfreighted in Europe).

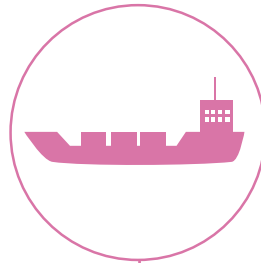
£££££



Short Lead Time

4-5 weeks (Made in Europe)

£££££



Long Lead Time

12-16 weeks (Made in Asia)

£££££

Need samples?

**Sample packs are available and completely refundable when you purchase printed packaging.
Click [here](#) for more information.**

Need storage?

**We also offer discounted warehouse facilities for all our customers.
Talk to one of our Customer Account Managers for more information on 0845 338 1741.**